

TMMi Assessor Accreditation Criteria Assessor & Lead Assessor

Version 2.4

Produced by the TMMi Foundation

Editor: Andrew Goslin

Copyright Notice
Unlimited distribution subject to Copyright
Copyright © TMMi Foundation, Ireland.

This TMMi Foundation material is furnished on an 'as-is' basis.

The TMMi Foundation makes no warranties of any kind, either expressed or implied, as to any matter included, but not limited to, warranty of fitness for purpose or merchantability, exclusivity, or results obtained from use of the material. The TMMi Foundation does not make any warranty of any kind with respect to freedom from patent, trademark or copyright infringement.

Use of any trademarks in this document is not intended in any way to infringe on the rights of the trademark holder.

Permission to reproduce this document and to prepare derivative works from this document for internal use is granted, provided the copyright and "No Warranty" statements are included with all reproductions and derivative works.

Requests for permission to reproduce this document or prepare derivative works of this document for external and commercial use should be addressed to the TMMi Foundation.

The following registered trademarks and service marks are used in the TMMi Foundation documentation: CMM®, CMMI®, TMMSM, TMMi®, IDEALSM, SCAMPISM, TMap®, and TPI®.

CMM and CMMI are registered in the U.S. Patent and Trademark Office by Carnegie Mellon University.

IDEAL and SCAMPI are service marks of Carnegie Mellon University.

TMM is a registered service mark of Illinois Institute of Technology.

TMMi® is a registered trademark of TMMi Foundation.

TMap and TPI are registered trademarks of Sogeti, The Netherlands.

Contributors

Clive Bates (UK)
Andrew Goslin (UK)
Mac Miller (UK)
Fran O'Hara (Ireland)
Klaus Olsen (Denmark)
Meile Posthuma (Netherlands)
Matthias Rasking (Germany)
Geoff Thompson (UK)
Erik van Veenendaal (Bonaire)
Brian Wells (France)
Jinwoo Yoon (South Korea)

Revisions

This section summarizes the key revisions between version 2.3 and the current version of this document.

This section is provided for information only.

2.3	Guidance on unaccredited assessor participation in assessments
3.2 & 3.3	Revised accreditation requirements for assessors and lead assessors over a 36 month period

Contents

1	Introduction	6
2	Accreditation Process	7
2.1	Assessment Methods	7
2.2	Service Providers	7
2.3	Assessors	7
3	Assessor Accreditation Rules & Criteria	8
3.1	General Rules	8
3.2	Assessors	8
3.3	Lead Assessors	9
3.4	Assessor Training Requirements	9
4	Accreditation Appeals Process	10
4.1	Failed Accreditation	10
4.2	Suspended and Revoked Accreditation	10
5	Appendix: Assessment Activities	11

1 Introduction

The intended users of this document are Assessment Sponsors, TMMi Service Providers and service providers' employees or associates who wish to be formally recognized by the TMMi Foundation as Accredited Assessors and Accredited Lead Assessors.

The TMMi Foundation publishes a list of all assessors on its website in order to maintain transparency of the individual assessor's status for customers of TMMi related services, TMMi service providers and the assessor community.

The process for becoming recognized as an assessor and the specific qualification criteria for each assessor role are covered in this publication. Note that the TMMi Foundation reserves the right to revise this process and these criteria at any time.

TMMi Assessors will generally be accredited to perform assessments on behalf of an accredited assessment provider using an accredited assessment method, which is compliant with the Test Maturity Model integration (TMMi), the TMMi Assessment Method Application Requirements (TAMAR) and the TMMi Data Submission Requirements (DSR), subject to the meeting the minimum qualification criteria defined below.

TMMi Assessors are expected to perform assessments objectively, meeting the highest level of professional integrity. Although assessors do not represent the TMMi Foundation, their performance of a TMMi assessment reflects upon the TMMi Foundation, their Service Provider and themselves. These qualification criteria are intended to ensure that TMMi Assessors are suitably qualified and experienced to perform a TMMi assessment to a consistently high standard ensuring that the assessment findings accurately reflect the organization being assessed.

2 Accreditation Process

The following key requirements must be met in order for an assessor to be recognized by the TMMi Foundation.

- The assessor must use an accredited Assessment Method
- The assessor must meet the respective qualification criteria defined for Accredited Assessors or Accredited Lead Assessors

2.1 Assessment Methods

The TMMi Foundation recognizes accredited assessment methods which meet the requirements defined in TAMAR, the DSR and are compliant with the TMMi. The TMMi Foundation's TMMi Assessment Method (TAM) is accredited to meet these requirements. The TMMi Foundation also accredits third party proprietary assessment methods provided that the assessment method meets these requirements.

For more information refer to the TMMi Foundation website

2.2 Service Providers

The TMMi Foundation recognizes accredited Service Providers, subject to

- Licensing the TMMi Assessment Method (TAM) from the TMMi Foundation, or
- Licensing an accredited proprietary assessment method from a third party, or
- Developing and obtaining accreditation of a proprietary assessment method.

For more information refer to the TMMi Foundation website

2.3 Assessors

The TMMi Foundation recognizes

- Assessors, and
- Lead Assessors

subject to meeting the specific qualification criteria for each role.

The assessor qualification criteria are grouped as follows:

- Testing experience, requiring the assessor to demonstrate practical testing knowledge and skills evidenced by appropriate certification
- Training and certification, requiring the assessor to demonstrate the required level of technical knowledge of the TMMi and an accredited assessment method (including practical application of this knowledge)
- Assessment experience, requiring the assessor to demonstrate their active participation in (formal and/or informal) assessments as demonstrated by the hours recorded on assessments

Note that credit *may* be granted, at the discretion of the TMMi Foundation, for

- Current assessment experience with other assessment methods and reference models¹
- Current TMMi based process improvement experience¹

Individuals who do not meet the criteria set out in this document are unaccredited. Unaccredited assessors may participate in assessments subject to the requirements defined in the TMMi Assessment Method Application Requirements (TAMAR) and as defined in the accredited assessment method used.

For more information refer to the TMMi Foundation website

¹ Supporting documentation and references must be provided for consideration by the TMMi Foundation

3 Assessor Accreditation Rules & Criteria

The TMMi Foundation will, at its sole discretion, accredit or reject Assessor and Lead Assessor applications based on the information provided by the applicant, information provided the applicant’s referees and the rules and criteria defined herein.

3.1 General Rules

- G01 The assessor’s identity number, name, organization and assessor status shall published on the TMMi Foundation website
- G02 Assessor’s accreditation shall be subject to the payment of the relevant accreditation fee
- G03 Assessors shall provide a minimum of two referees who are willing and able to provide independent and confidential references²
- G04 The TMMi Foundation reserves the right to withdraw an assessor’s accreditation at any time Assessor accreditation may be suspended or revoked (without prior notice) at the sole discretion of the TMMi Foundation³
- G05 The TMMi Foundation reserves the right to audit any assessor during the performance of any assessment⁴

3.2 Assessors

Assessors are formally accredited to perform assessments and may

- take part in or lead informal assessments
- take part in formal assessments

Testing Experience

EA01 Certified at ISTQB Foundation Level, or equivalent

Certification and Training

PA01 TMMi Professional certified

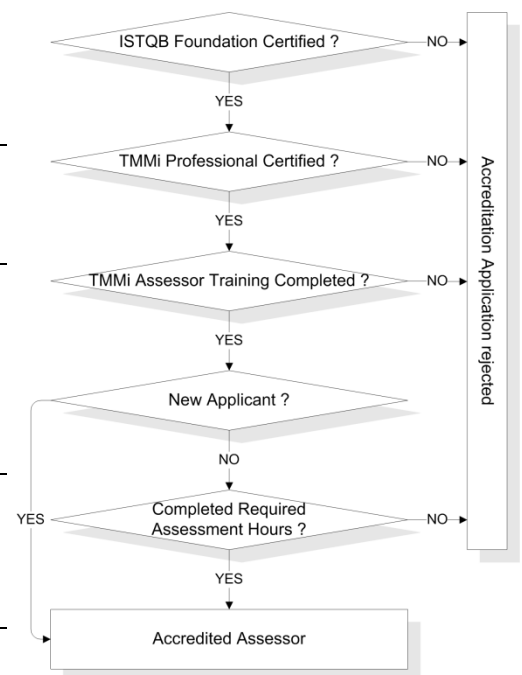
PA02 TMMi Assessor⁵ or equivalent training completed

Assessment Experience

(based on Assessment Results accepted by the TMMi Foundation)

AA00 New applicants only: No participation in an assessment is required.
AA01 is waived and does not apply for the *first 36 months* as an accredited Assessor.

AA01 A minimum 50 hours participation on (formal or informal) assessments completed in the *past 36 months*



² The TMMi Foundation may reject an assessor application if an adverse reference is provided, reserving the right to protect the referee’s identity

³ The TMMi Foundation shall provide the reason(s) for the suspension or disqualification, including but not limited to any report of dishonesty, professional misconduct or action bringing the TMMi Foundation or any Service Provider into disrepute

⁴ In accordance with TAMAR the Lead Assessor shall notify the TMMi Foundation of each formal assessment prior to commencing the assessment

⁵ Applicants shall have met the TAM Assessor / Lead Assessor continuous assessment criteria and have passed the written exam. Note that equivalent assessor training courses may have differing requirements.

3.3 Lead Assessors

Lead Assessors are formally accredited to perform assessments and may

- take part in or lead informal assessments
- take part in or lead formal assessments

Testing Experience

EL01 Certified at ISTQB Advanced Level - Test Manager or equivalent test management certification

Certification and Training

PL01 TMMi Professional certified

PL02 TMMi Assessor⁵ or equivalent training completed

PL03 TMMi Lead Assessor⁵ or equivalent training completed

Assessment Experience

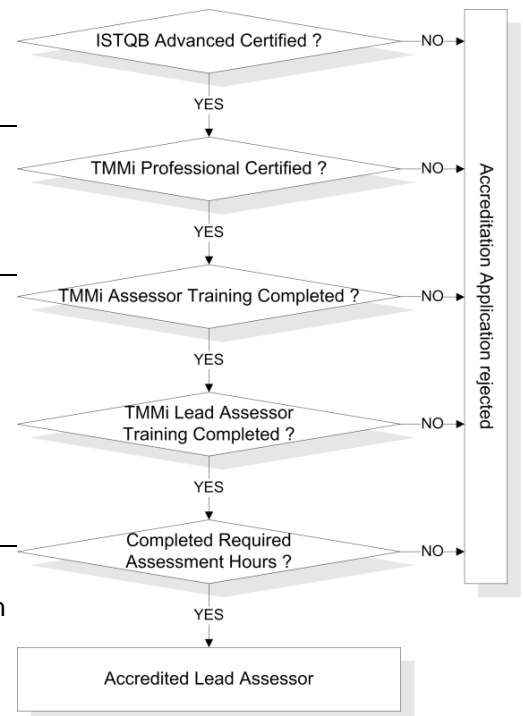
(based on Assessment Results accepted by the TMMi Foundation)

AL00 New applicants only: A minimum 75 hours participation on *at least one* (formal or informal) assessment must be completed in the *past 12 months*⁶
AL01 & AL02 are waived and do not apply for the *first 36 months* as an accredited Lead Assessor

AL01 A minimum 225 hours participation on (formal or informal) assessments completed in the *past 36 months*

AL02 Participation in *at least one* (formal or informal) assessment in *each 12 month period* in the *past 36 months*

AL03 Evidence of participation in all assessment activities in accordance with the Assessment Team Leader responsibilities as defined in the TMMi Assessment Method Application Requirements (TAMAR)⁷



3.4 Assessor Training Requirements

3.4.1 Testing Experience

Alternate certification to the ISTQB scheme may be accepted (at the discretion of the TMMi Foundation) provided that the applicant is able to demonstrate that the content of the alternate certification meets or exceeds the relevant ISTQB syllabus requirements.

The applicant may be requested to provide additional evidence to support their application using an alternate certification scheme.

3.4.2 Assessor Training

Assessor training should comprise of 15-21 hours instruction, including 8-11 hours practical exercise. Participation in assessments shall be credited towards this requirement.

Evidence of the training and assessment experience shall be required.

3.4.3 Lead Assessor Training

Lead Assessor training should comprise of 5-7 hours further instruction, including 3-4 hours practical exercise. Participation in assessments shall be credited towards this requirement.

Evidence of the training and assessment experience shall be required.

⁶ A new Lead Assessor application may be completed *at any time*, provided that criteria AL00 & AL03 are satisfied

⁷ See 5 Appendix: Assessment Activities

4 Accreditation Appeals Process

Appeals may be lodged with the TMMi Foundation in writing, if

- An accreditation application fails, or
- An Assessor or a Lead Assessor is suspended.

If the appeal fails, the TMMi Foundation may grant or refuse further appeals, as may be appropriate and reasonable given the particular circumstances of the appeal.

4.1 Failed Accreditation

The TMMi Foundation shall provide written reasons where the application was deemed not to have met the above criteria such that the assessor may attempt to remedy the issue(s) preventing accreditation.

4.2 Suspended and Revoked Accreditation

The TMMi Foundation shall provide written reasons where the assessor's accreditation has been suspended (as soon as practically possible, but no more than ten (10) working days after applying the suspension) and may request specific actions in order to remedy the issue(s) which led to the suspension.

The assessor shall be granted sixty (60) calendar days from the date of suspension to lodge an appeal. If the assessor is unable to lodge an appeal or remedy the issue(s) which led the suspension within this period, then the TMMi Foundation may grant further leave of appeal at its sole discretion.

If upon appeal, the TMMi Foundation has reached the reasonable judgement that the assessor has acted dishonestly, fraudulently or committed any other act which the TMMi Foundation deems to be incompatible with the duties and trust placed in an accredited assessor the TMMi Foundation may revoke the assessor's accreditation permanently.

5 Appendix: Assessment Activities

The Assessment Team Leader responsibilities are defined in TAMAR section 3.2.6 Responsibilities and require the participation in all aspects of the assessment.

The TMMi Data Submission Requirements (DSR) describes five types of assessment activities, namely: Planning, Evidence Gathering, Evidence Review, Assessment Reporting and Assessor Reporting. The effort for each activity must be recorded (in hours) for each individual assessor on every assessment.

- **Planning:** The effort required to complete the planning and preparation activities for the assessment.
- **Evidence Gathering:** The effort required to complete evidence gathering activities, including interviews, identifying and obtaining of document artifacts and other evidence.
- **Evidence Review:** The effort required to complete the assessment review activities, including the review of interviews, document artifacts and other evidence to assess the level of compliance with the requirements of the TMMi.
- **Assessment Reporting:** The effort required to complete the assessment report to be submitted to the sponsor, including preparing presentations and reports documenting assessment ratings (for formal assessments only) and the assessment findings, i.e. strengths and weaknesses for each process area in the scope of the assessment.
- **Assessor Reporting:** The effort required (by Assessors and Lead Assessors) to complete the reports on the activities completed by individual assessors and their personal performance over the course of the assessment and any related supervisory activities, e.g. identification of training needs, feedback sessions etc.